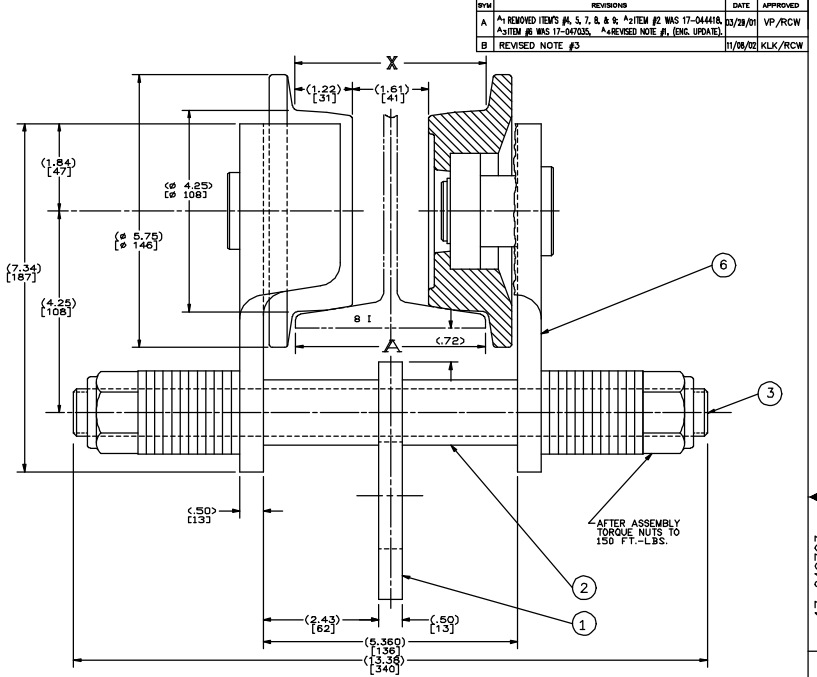
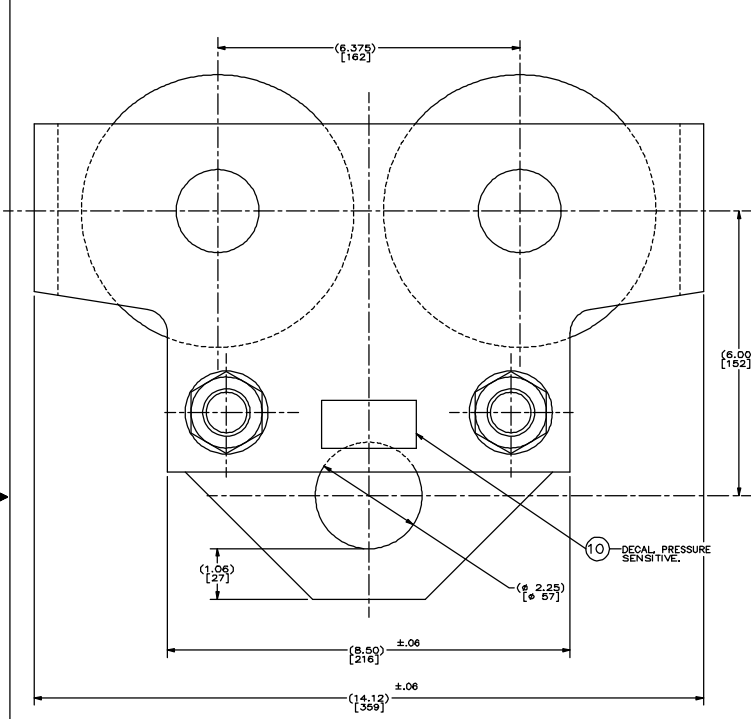


SYM	REVISIONS	DATE	APPROVED
A	REVISED ITEMS #1, 5, 7, & 8; *ITEM #2 WAS 17-044416; *ITEM #3 WAS 17-044418; *REVISED NOTE #1, (ENG. UPDATE)	11/29/01	VP/RCW
B	REVISED NOTE #3	11/06/02	KLK/RCW



- NOTES:
- ASSEMBLE TROLLEY WHEELS, BEARINGS AND RETAINER RINGS TO SIDE PLATE, AFTER ASSEMBLY PAINT ALL OVER WITH GLOSS BLACK, SP 190-670, FAST DRYING ENAMEL.
 - THE HANGER SHAFT, WASHERS, SPACER TUBES, LOCK NUTS AND HANGER TO BE SHIPPED LOOSE IN A CLOTH BAG.
 - CAPACITY 6500 POUNDS, (3000 KG), (TROLLEY ULTIMATE STRENGTH MUST BE IN EXCESS OF FIVE TIMES RATED CAPACITY-33,000 POUNDS).
 - TROLLEY WHEEL OUTER TREAD TO BE CROWNED TO OPERATE ON EITHER TAPERED, OR FLAT BEAM.
 - EACH TROLLEY TO BE PACKED WITH ONE-PAGE INSTRUCTION SHEET, (TL-680-1).
 - DIMENSIONS IN [] ARE MILLIMETERS.

QTY.	ITEM	SIZE	PART OR IDENTIFYING NO.	NOMENCLATURE OR DESCRIPTION	CODE IDENT	MATERIAL OR NOTE	SPECIFICATION
1	10	A	17-049717	NAME PLATE DECAL			49703-DEC
1	7	C	17-053436	SIDE PLATE & WHEEL ASSEMBLY			47035-A
1	2	B	17-049716	HANGER SHAFT			
1	2	B	17-053439	3 TON HARDWARE			3 T HDWE
1	1	C	17-044419	HANGER			

DESIGNED BY: D.J.H.	DATE: 8-28-96
CHECKED BY: RCW	
APPROVED BY: D.J.H.	
SCALE: FULL	

3 TON HOIST TROLLEY
FILE NAME: D-49703
CODE IDENT NO. 52793 D
17-049703
SCALE: FULL ACT WT 67# SHEET

B WF X 31#	(8.000) [203]	(8.183)			
(20") [305]	(6.250) [159]	(6.478)			
(8") [203]	(4.000) [102]	(4.173)			
I-BEAM	A	X	HEAT TREAT	USED ON	QTY

D-449 MIN RAD. LAYOUT

D-17-044903

17-049703